

## Specifications

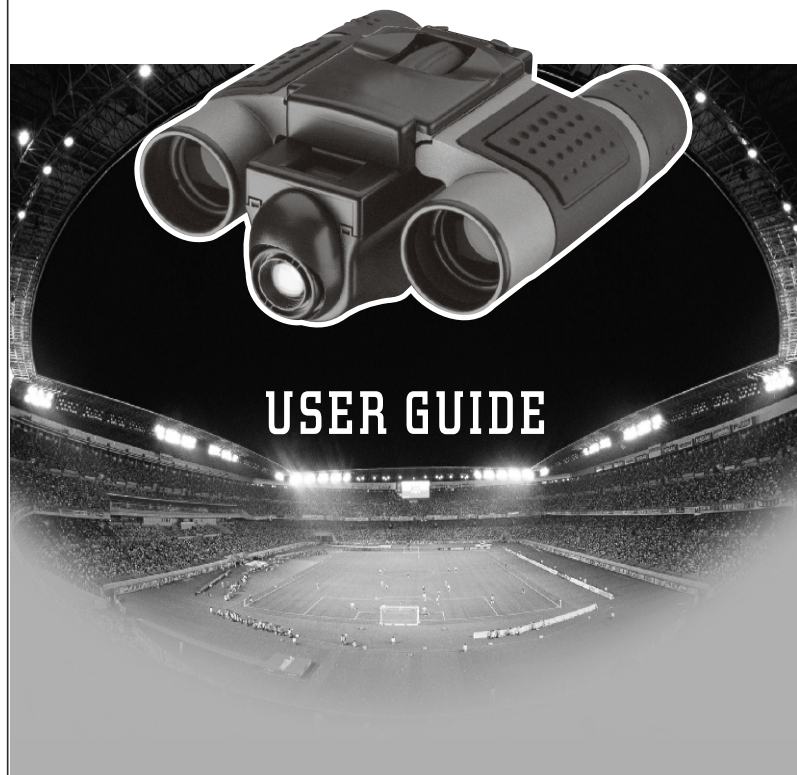
Digital Camera	
Resolution	640X480(VHI)/ 320X240(LO)
Photograph measure	H1.★ -52/ LO ★ -209
Image sensor	CMOS sensor
Focus range	10m~infinity
Exposure	Auto
White balance	Auto
Memory inside	8MB SDRAM
Battery	AAA alkaline battery x 2
Binoculars	
Specifications	8 x 22mm
Angular field of view	7°Field of view: 122m at 914m
Exit pupil	2.6mm
Eye Relief	10mm
Prism Type	K9
Coatings	Single layer, fully coated
Close focusing distance	5m
Package Contents	
USB Cable	1
CD-ROM	1 Photo Express V3.0, Optimum Win98SE/2000/XP/ME
Housing Dimensions	112mm X 91.8mm X 50.2mm
Housing Weight	264.5g

B03



# **DIGITAL** *ViewCatcher*

Integrated Binocular and Digital Camera



## USER GUIDE

### **Troubleshooting**

Please make sure to use the following connection and disconnection procedures to download pictures.

- a. Only connect ViewCatcher to your PC when the PC is on and Windows has completed loading.
- b. Your ViewCatcher and PC must be connected before running the software program.
- c. Avoid connecting, disconnecting and reconnecting the camera, if you have Downloaded pictures and disconnected the camera, please reboot before reconnecting.
- d. Always disconnect ViewCatcher before shutting down the PC.

If ViewCatcher is unexpectedly not recognized by the software program, close the program, disconnect the camera and reboot your PC. Only connect and disconnect your ViewCatcher using the procedure outlined in this section.

## User's guide

### Contents

1. Introduction.....	P.1
2. Name of each part.....	P.2
3. How to use your binocular.....	P.3 ~ 4
*Adjustment of Eye Relief for Eyeglass Wearers / Adjusting the Eyepieces / Focusing the Binocular	
4. How to use your camera.....	P.4 ~ 5
*Inserting Batteries / Taking Pictures / Self-Timer Mode / Erasing/ Deleting Picture	
5. Digital camera modes.....	P.6
*Resolution Options / Other Modes	
6. System Requirements.....	P.7
7. Software and driver installation.....	P.7 ~ 13
*Software Installation / Driver Installation / Important Note Regarding Device Driver Installation / Troubleshooting	
8. Maintenance.....	P.14

## I. Introduction

ViewCatcher is a 8 x 22 binocular integrated with a digital camera that is great for spotting events, concerts and wildlife activities such as hunting or bird-watching. It is not the tool for a serious photographer, but it is a ton of fun and lets you record memories and sights at the touch of a button. Use the full-featured 8x22 binocular for closer views and capture images to take home with you at the same time.

ViewCatcher makes it possible to share your fun with others by downloading images from the camera right to your computer for fax or e-mail to your friends and family.



## Image Download

### 1. Open Photo Express software

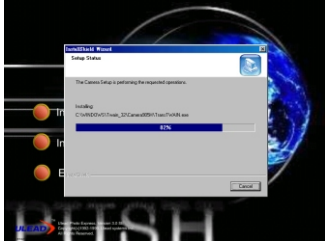


### 2. Display download selected screen and press "Acquire" or others item.

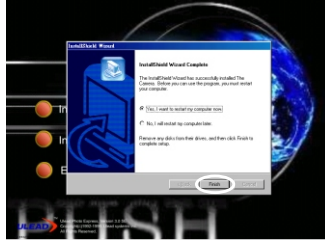


### 3. Image will be download to PC.

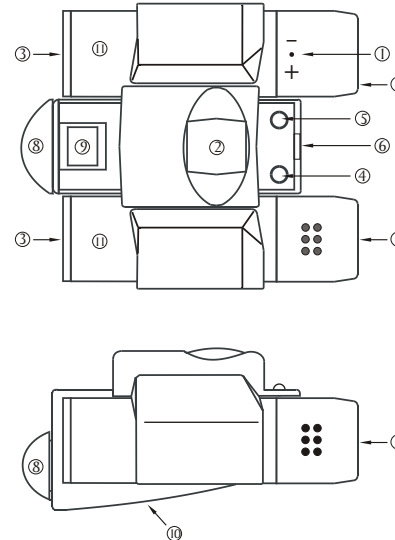
## 8.Auto installing



## 9.Press "Finish" to restart your computer



## 2. Name of each part



- 1.Diopter Knob(on underside)
- 2.Center Focus Knob
- 3.Objective Lens
- 4.Power/Mode Button
- 5.Shutter/Set Button
- 6.USB Port
- 7.Eyepiece
- 8.Camera Lens
- 9.LCD Screen
- 10.Battery Compartment Lid
- 11.Barrel

Fig. 1

## 3. How to use your binocular

### WARNING !

**NEVER USE A VIEWCATCHER TO LOOK AT THE SUN !**

Looking at or near the Sun will cause instant and irreversible damage to your eye. Eye damage is often painless, so there is no warning to the observer that damage has occurred until it is too late. Do not point the binocular at or near the Sun. Children should always have adult supervision while observing.



### Adjustment eye-relief for eyeglass wearers

Fold down the rubber eyecups and place them against your glasses to get the best viewing result.

### Adjusting the eyepieces

The distance between your eyes is called interpupillary distance, or IPD. The IPD is different from one person to another. It is important to adjust to your IPD before using your ViewCatcher:

- Hold ViewCatcher firmly in the normal viewing position.
- Adjust the barrels by pushing together or pulling apart until you see a single circle field with both of your eyes. (Fig. 2)

### Focusing the Binocular

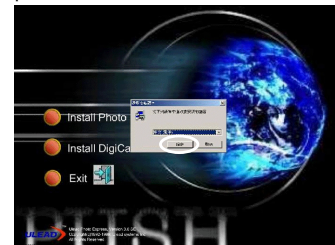
- a. Set the Diopter on underside of ViewCatcher (Fig. 1) at its center point between + and - .
- b. Choose an object that is 5m away.
- c. Looking with just your left eye, rotate the Center Focus Knob (Fig. 1) until the object you are viewing is in best focus.
- d. Looking with just your right eye, rotate the Diopter Knob (Fig. 1) until the object you are viewing is in best focus.
- e. Viewing your object with both eyes, turn the Center Focus Knob (Fig. 1) to bring it in best focus.

1. Insert your CD

2. In Photo Express 3.0 Auto run screen and select "Install Photo Express 3.0"



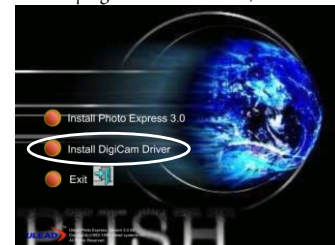
3. Select install language you want and press



4. Step by step to Install Photo Express as instruction



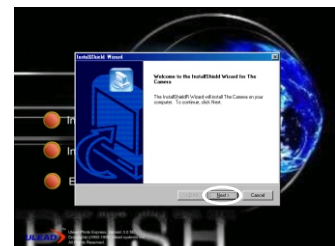
5. Install ViewCatcher driver (USB cable must be unplug from ViewCatcher)



6. Step by step to install driver as instruction



7. Press "Next"



7-3.If necessary, navigate to your CD driver, open the Driver folder and then click the open button.(Please notice that Windows may already be in this folder. The needed files are all located in the D:\Driver folder. Most CD drives are assigned as drive D. Please substitute your CD driver letter for D as appropriate for your CD driver.)

7-4.Click the OK button in the next window.

7-5.Windows again asks for the installation disk. Click the OK Button.

7-6.Windows is now looking for another system file. Repeat steps 2-4.

7-7.Windows is now looking for an initialization file(filename.ini).

Repeat steps 2-4.

With the software and driver loaded, your computer rebooted and the ViewCatcher connected to your PC, you are now ready to run the Ulead Photo Express software to download and share images.

Ulead Photo Express allows you to capture, print, and e-mail images, and create custom cards, messages, and greetings. You will find the ViewCatcher camera listed as TheCamera90 within the software program. Refer to the manual loaded on your hard drive(Start/Programs/Ulead Photo Express) and the on screen Help menu for more information about the program.

#### NOTE:

For best image viewing, set your PC monitor to 16-bit or 24-bit color. Ulead Photo Express is a proprietary program, and may not be sold, licensed or distributed without the express written consent of Ulead. For more information about Ulead Photo Express you may visit the Ulead website at [www.ulead.com/pe](http://www.ulead.com/pe).

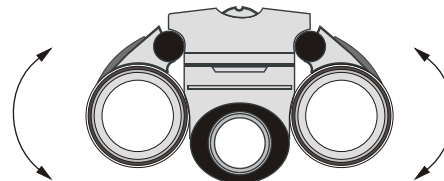


Fig.2:Adjustment of interpupillary Distance (IPD).

## 4. How To Use Your Camera

### Attention!!:

- Remove the batteries when not using the camera. Failure to do so will result in losing pictures and dead battery after several days.
- When batteries are removed, memory of pictures can maintain for 90 seconds. Batteries must be replaced within 90 seconds to avoid losing pictures. Be sure the ViewCatcher is OFF before charging the batteries.

### Inserting Batteries

Lift the battery compartment lid (Fig. 1) and insert two AAA size batteries.

### Taking Pictures

- Press the power/ mode button to turn on the camera.
- Select a picture resolution mode by pressing the power/mode button, to show the " ☆ " screen for 640x480 high resolution mode and the " \* " screen for 320x240 resolution mode.

Use the shutter/select button (Fig.1) to select a mode; a beep will sound to confirm the selection. The mode selected will show on the LCD. See "Digital Camera Modes" for more information.



- c. View a target through ViewCatcher.
- d. Press the shutter/select button (Fig.1) .  
A beep sounds to confirm that a picture was taken.
- e. The counter in the LCD decreases by one.

### **Self-Timer Mode**

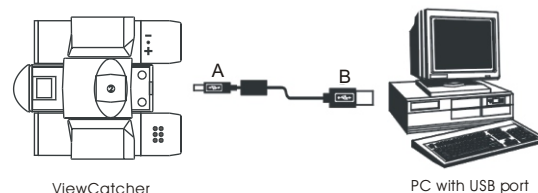
The self-timer allows a 10 second delay before taking a picture.

- a. Press the power/mode button (Fig.1) to turn on the camera.
- b. Select a picture resolution mode by pressing the power/mode button to show the " \* " screen for 640x480 high resolution mode and the " \* " screen for 320x240 resolution mode.  
Use the shutter/select button (Fig.1) to select a mode ; a beep will sound to confirm the selection. The mode selected will show on the LCD. See "Digital Camera Modes" for more information.
- c. Press the power/mode button until the self-timer option displays.  
It shows the resolution you chose and a clock.
- d. Press the shutter/select button. It beeps a "Be" sound.
- e. ViewCatcher beeps when the picture has been taken.
- f. The counter in the LCD decreases by one
- .

### **Erasing/Deleting Pictures**

Use the  option to erase the last picture, or use the  option to erase all the pictures .

Click on "Install Driver" on the software installation screen and follow the prompts. When prompted, restart your PC. After Windows loads, connect the ViewCatcher to the computer's USB port (Fig. 3) .  
How to download image from ViewCatcher (see P.12)



**Fig.3: Connecting ViewCatcher to a PC.**

### **Important Note for Device Driver Installation**

Depending upon the device drivers that are already installed on your computer system, the ViewCatcher driver installation just outlined may not be recognized correctly by Windows the first time you connect the camera. If this occurs, it is easily remedied by performing the following in response to the questions Windows will ask you:

- 7-1. After connecting the ViewCatcher to your PC for the first time, Windows asks you to insert the installation CD into your CD-ROM driver. Please insert the CD and click the OK Button.
- 7-2. Windows will tell you it needs to find some files. Windows first asks for a system file (filename.sys). Click the Browse... button.

## 6. System Requirements

- 6-1.Windows 98SE / Windows Me / Windows 2000 / Windows XP.
- 6-2.200MHz (or equivalent) processor or faster.
- 6-3.64 MB of SDRAM
- 6-4.Video (VGA) card with 2MB of RAM for minimum 16-bit  
(High Color) display.
- 6-5.CD-ROM driver
- 6-6.USB port
- 6-7.600 MB of free hard drive space.

## 7. Software and Driver Installation

Put the CD (bundled with your ViewCatcher) into the CD-ROM driver, then the start screen will come up automatically.(see P.10)

### Driver Installation

Before connecting the ViewCatcher to your PC, you need to install aTheCamera90 driver for your PC to recognize the ViewCatcher. (See P.10)

## 5. Digital Camera Modes



Default Setting: Taking pictures at this mode.  
The selected resolution displayed at bottom left.  
The battery life indicator displayed at lower right.

### Resolution Options

As taking pictures, the number of picture is down counting.(For example, when you take by hi resolution for 5 pictures, the monitor appears "47" and so on.)



High Resolution (640x480)Mode(VHI).  
ViewCatcher will store up to 52 images.



Low Resolution (320x240)Mode(LO).  
ViewCatcher will store up to 209 images.

### Other Modes



Off screen.



Self-Timer Mode with 10 second delay.



Erase All Image Mode.



Erase Last Picture Mode.



## 8.Maintenance

Operating Environment: 41° to 104° F (5° to 40° C). 20%-85% relative humidity, non-condensing

### Care of your ViewCatcher

8-1.Never immerse ViewCatcher into any fluid or liquid.

Remove dust or stains with a soft cloth dampened with water or neutral detergent. Keep in a dry and cool dust-free environment or a container when it is NOT used.

8-2.Take the batteries out when ViewCatcher is NOT to be used over a long period.

8-3. Avoid dropping the ViewCatcher. Do not disassemble ViewCatcher.

8-4.Download pictures to your PC before removing the batteries.